

10'-0" x 12'-0" AZUSA TRANSFORMER PAD W/5'-0" x 8'-6" ENCLOSURE x 60" DEEP

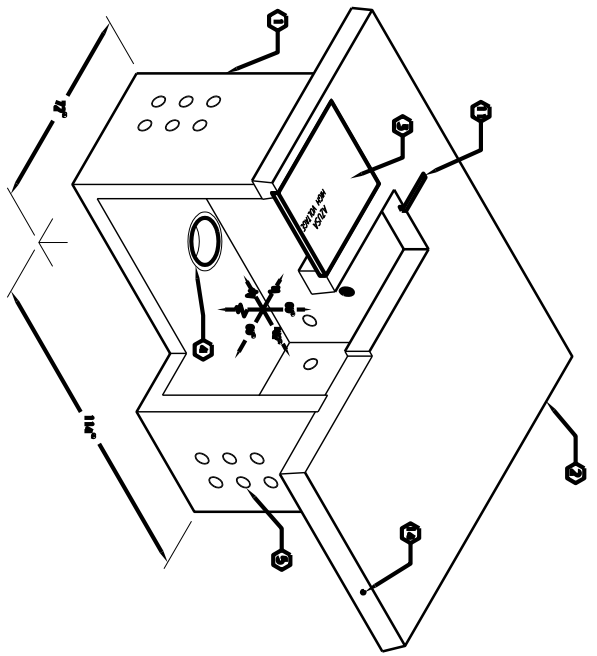
NOTES:

1. EXPOSED REIN FOR W-20-44 BENT UP TOPPING USING 3.000 P.S.I. FOR CHAIRS AND BENT UP P.S.I. (GRADE 60) REINFORCED STEEL FOR CHAIRS. 7' 8" LONG.
2. COVER EXPOSED REIN REINFORCING LAPPING.
3. ALL AIRSPACE SURFACES SHALL BE FINISHED WITH 1/2" GYPSUM BOARD OR FULL LAYER SPARTAN.
4. SPACER ENCLOSURE TO BE FINISHED WITH 1/2" GYPSUM BOARD FOR THE FLOOR IN INSTALLATION AND TOP LAYER CONSTRUCTION.

GENERAL NOTES:

1. Reinforcement shall be placed in accordance with the approved drawings and specifications for the project.
2. All reinforcement shall be placed in accordance with the approved drawings and specifications for the project.
3. All reinforcement shall be placed in accordance with the approved drawings and specifications for the project.
4. All reinforcement shall be placed in accordance with the approved drawings and specifications for the project.
5. All reinforcement shall be placed in accordance with the approved drawings and specifications for the project.
6. All reinforcement shall be placed in accordance with the approved drawings and specifications for the project.
7. All reinforcement shall be placed in accordance with the approved drawings and specifications for the project.
8. All reinforcement shall be placed in accordance with the approved drawings and specifications for the project.
9. All reinforcement shall be placed in accordance with the approved drawings and specifications for the project.
10. All reinforcement shall be placed in accordance with the approved drawings and specifications for the project.
11. All reinforcement shall be placed in accordance with the approved drawings and specifications for the project.
12. All reinforcement shall be placed in accordance with the approved drawings and specifications for the project.
13. All reinforcement shall be placed in accordance with the approved drawings and specifications for the project.
14. All reinforcement shall be placed in accordance with the approved drawings and specifications for the project.

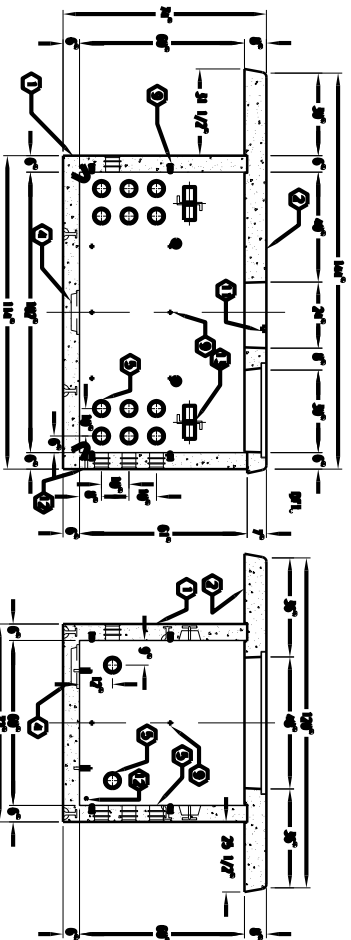
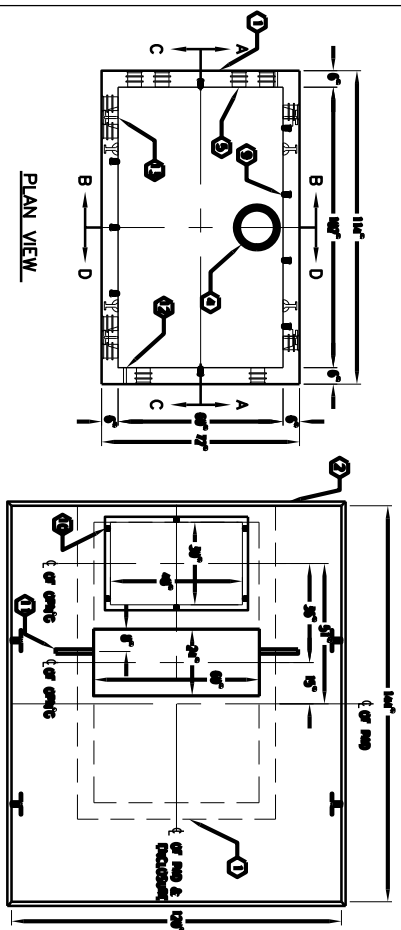
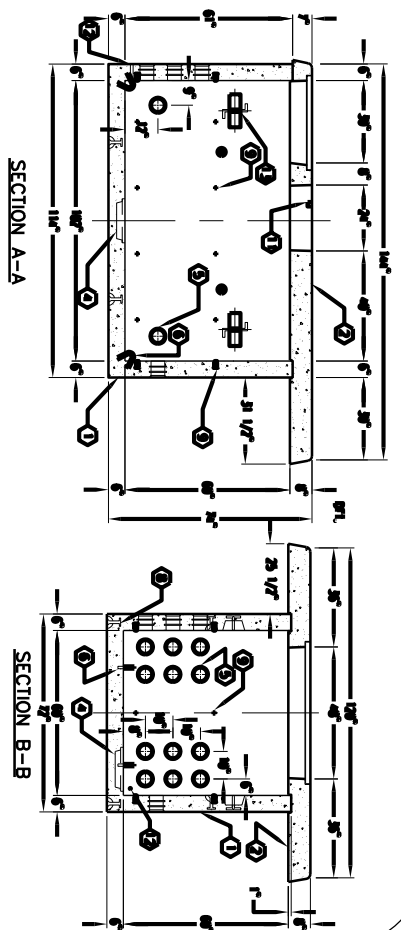
1. 3000-psi-11.6" square section 14.000 sq. ft. concrete slab with 1/2" rebar.
2. 3000-psi-11.6" square section 14.000 sq. ft. concrete slab with 1/2" rebar.
3. 3000-psi-11.6" square section 14.000 sq. ft. concrete slab with 1/2" rebar.
4. 3000-psi-11.6" square section 14.000 sq. ft. concrete slab with 1/2" rebar.
5. 3000-psi-11.6" square section 14.000 sq. ft. concrete slab with 1/2" rebar.
6. 3000-psi-11.6" square section 14.000 sq. ft. concrete slab with 1/2" rebar.
7. 3000-psi-11.6" square section 14.000 sq. ft. concrete slab with 1/2" rebar.
8. 3000-psi-11.6" square section 14.000 sq. ft. concrete slab with 1/2" rebar.
9. 3000-psi-11.6" square section 14.000 sq. ft. concrete slab with 1/2" rebar.
10. 3000-psi-11.6" square section 14.000 sq. ft. concrete slab with 1/2" rebar.
11. 3000-psi-11.6" square section 14.000 sq. ft. concrete slab with 1/2" rebar.
12. 3000-psi-11.6" square section 14.000 sq. ft. concrete slab with 1/2" rebar.
13. 3000-psi-11.6" square section 14.000 sq. ft. concrete slab with 1/2" rebar.
14. 3000-psi-11.6" square section 14.000 sq. ft. concrete slab with 1/2" rebar.



MINIMUM FOUNDATION SIZE
7'-0" x 11'-0" x 1.000 IN. RCDD.

JENSEN
PRECAST

K586-SB60-31
DIV. OF AZUSA ONE BDR
03-01-02



JENSEN
PRECAST

K586-SB60-31
DIV. OF AZUSA ONE BDR
03-01-02