

# 4'-0" X 7'-0" ANAHEIM TRAFFIC SWITCH ENCLOSURE X 6'-6" DEEP

**NOTES:**

- VAULT DESIGNED IN ACCORDANCE WITH AASHTO H-20-44 TRAFFIC BRIDGE LOADING USING 5,500 PSI [37.92MPa] COMPRESSIVE STRENGTH CONCRETE AND 60,000 PSI [413.2MPa] YIELD STRENGTH ASTM A-706 STEEL REINFORCEMENT PER CALCS. #30342.
- COVER DESIGN FOR HS-20-44 TRAFFIC WHEEL LOADING USING THE AASHTO FIFTEENTH EDITION (30%) IMPACT DESIGN METHOD PER CALCS. #31408.
- VAULT TO BE PLACED ON A MIN. 6" BASE OF CRUSHER RUN FOR EASE OF INSTALLATION AND EVEN LOAD DISTRIBUTION.
- ALL INTERIOR SURFACES SHALL BE PAINTED WITH TWO COATS OF FLAT LATEX WHITE PAINT (FRAZEE #410 OR EQUAL).

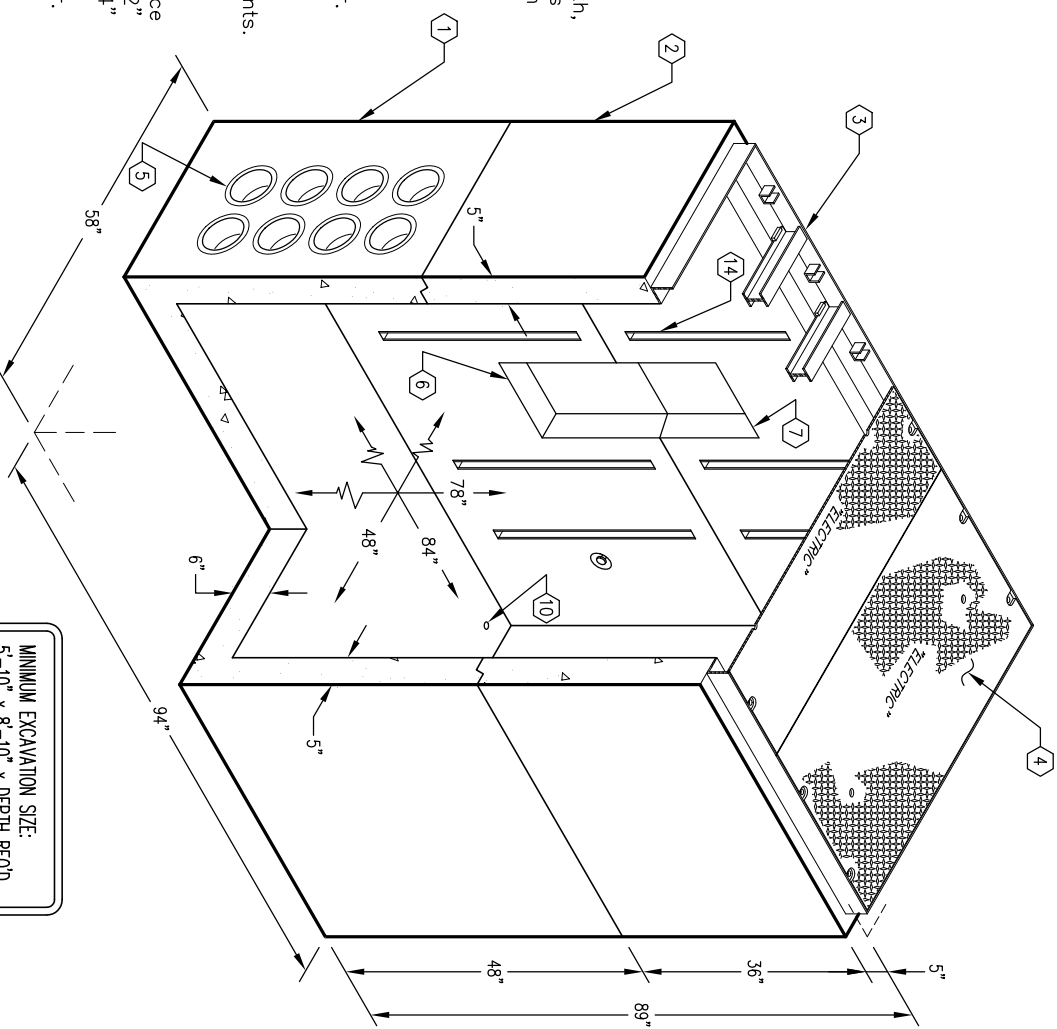
**ORDERING INFORMATION:**

K47-SE82-16T FOR ASSEMBLY AS SHOWN.  
 APPROVED FOR ANAHEIM SPEC. CU 1600-3D.  
 TOTAL ASSEMBLY WT. 13,375 Lbs.

**GENERAL NOTES:**

1. Minimum soil bearing capacity is hereby assumed to be 2000 PSF unless otherwise documented by a geotechnical report that shall be provided to Jensen Precast by the end user. Jensen Precast shall not be held responsible for the soil bearing capacity.
2. Installation of Manholes, Vaults, Handholes, Meter Boxes etc. will be as per Jensen installation procedures.
3. Structural modification to the Jensen line of products is not permitted without prior written approval from Jensen Engineering Department.
4. Do not scale the drawings, verify all dimensions including rough openings, if any discrepancies are found, notify the Jensen Engineer immediately.
5. The Jensen Engineer will interpret the intent of the drawings in case of possible conflict or discrepancy.
6. Permissible Variations:  
 Dimensional Tolerances – The length, width, height, or dia. measurements of the structure when measured on the inside surfaces shall not deviate form design dimensions by more than the following:  
 Dimensions: Tolerance:  
 0 to 5 Feet 1/4"  
 5 to 10 Feet 3/8"  
 10 to 20 Feet as agreed upon between the supplier and purchaser.  
 Squareness Tolerance:  
 The inside of the precast concrete component shall be square as determined by diagonal measurements. The difference between such measurements shall not exceed the following:  
 Measured Length: Allowable Difference  
 0 to 10 Feet 1/2"  
 10 to 20 Feet 3/4"  
 20 Feet and over as agreed upon between the supplier and purchaser.
- 7.

1. SE47-B42-16, 42" BOTTOM SECTION, WT. 8,017 Lbs.
2. SE47-T36-16, 36" TOP SECTION, WT. 4,438 Lbs.
3. F47-PB-TBD, 5" FRAME GALV. WT. 177 Lbs.
4. CA47-TG-16, 3 PIECE TRAFFIC COVER (SC47-TGV) W/(5) BEAMS (SCB47-1390T) (12) 1/2" x 1 1/2" S.S. HEX HEAD BOLT DOWNS, GALV. TAMPER PLATES BELOW LIFT HOLES, GALV. FINISHED, MARKED "ELECTRIC", WT. 743 Lbs.
5. 6" DIA. TERM (6625G) BOTTOM SECTION (32) CORE MTD. 18" x 12" x 3 1/2" DEEP K.O. DRAFT AS FOLLOWS: T=0", S1=1", S2=1", B=1", BOTTOM SECT. (1) CORE MTD. 18" x 12" x 3 1/2" DEEP K.O. DRAFT AS FOLLOWS: T=1", S1=1", S2=1", B=0", TOP SECTION (1) CORE MTD.
6. 1" DIA. BLIND GROUND ROD HOLE. BOTTOM SECT. (2) REQ'D. CORE MTD.
7. 5/8" COPPER CLAD STEEL GROUND ROD ATTACHED TO REBAR x 6" LONG. 3" PROJECTION BOTTOM SECT. (2) REQ'D. CORE MTD.
8. 13" x 14" DIA. SWMP x 4 1/2" DEEP (5000-393J) W/GRADED COVER PLATE
9. X 1" COIL THRD. INSERTS BOTTOM SECTION (2) CORE MTD.
10. 1 5/8" x 1 5/8" GALV. UNISTRUT x 24" BOTTOM SECTION (10) CORE MTD.; TOP SECTION (12) CORE MTD.



MINIMUM EXCAVATION SIZE:  
 5'-10" x 8'-10" x DEPTH REQ'D.

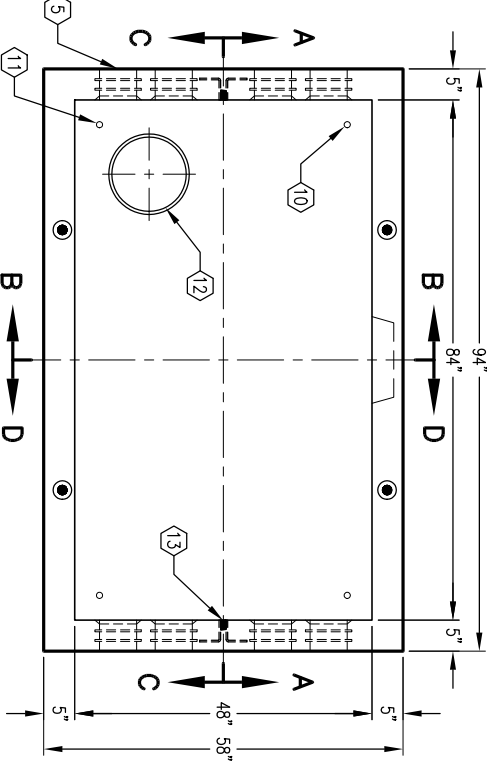
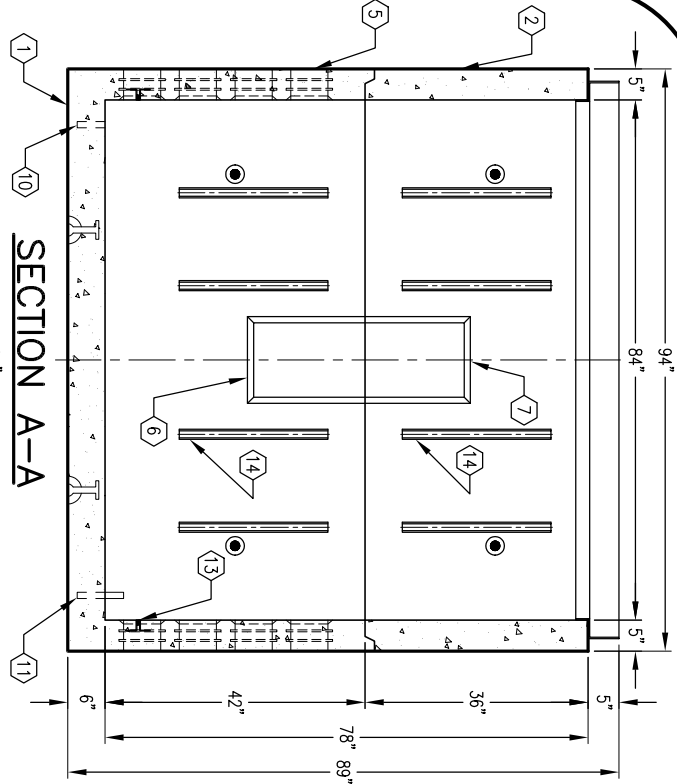
**K47-SE82-16T**



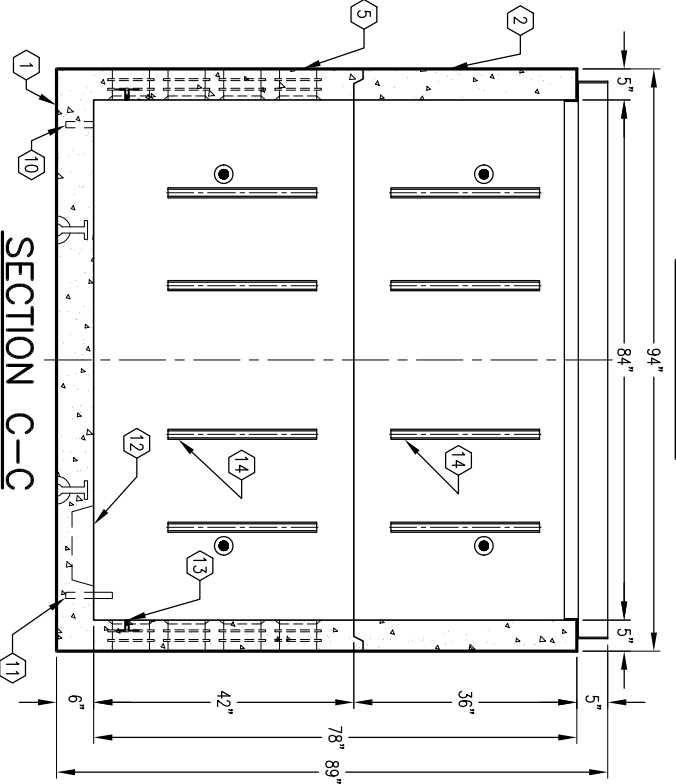
AUTODRAW REL. 14

PER CITY OF ANAHEIM SPEC. CU 1600-3D

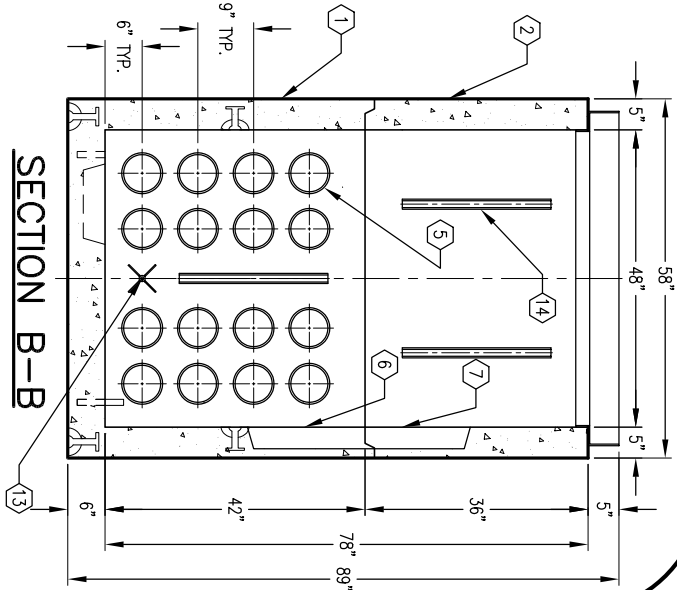
03-01-02



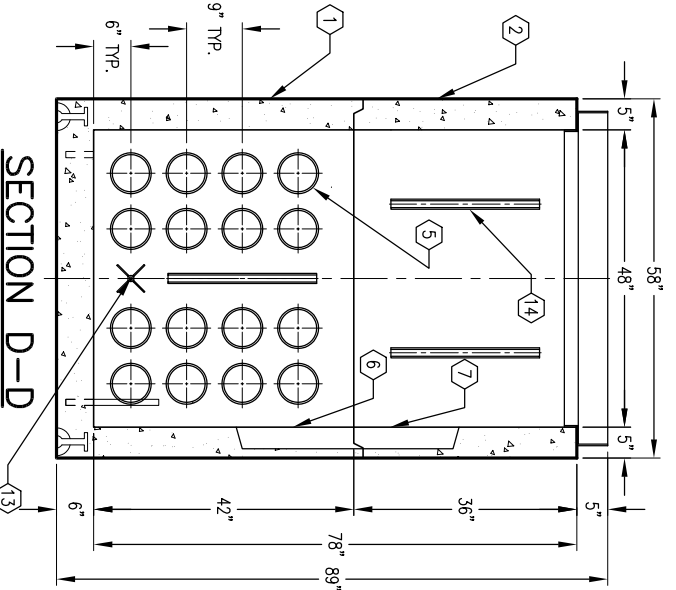
**PLAN VIEW**



**SECTION C-C**



**SECTION B-B**



**SECTION D-D**

#	DATE	DESCRIPTION	BY

**K47-SE82-16T**

PER CITY OF ANAHEIM SPEC. CU 1600-3D

03-01-02

