

# 4'-0" x 4'-0" ANAHEIM 3-WAY INTERCEPT PULL BOX x 48" DEEP

- NOTES:
- VAULT DESIGNED IN ACCORDANCE WITH AASHTO H-20-44 TRAFFIC BRIDGE LOADING USING 5,500 PSI [37.92 MPa] COMPRESSIVE STRENGTH CONCRETE AND 60,000 PSI [413.2 MPa] YIELD STRENGTH ASTM A-706 STEEL REINFORCEMENT PER CALCS. #30649
  - COVER DESIGNED FOR PARKWAY LOADING 300 P.S.F. OR TRAFFIC LOADING H-20.
  - VAULT TO BE PLACED ON A MIN. 6" BASE OF CRUSHER RUN FOR EASE OF INSTALLATION AND EVEN LOAD DISTRIBUTION.

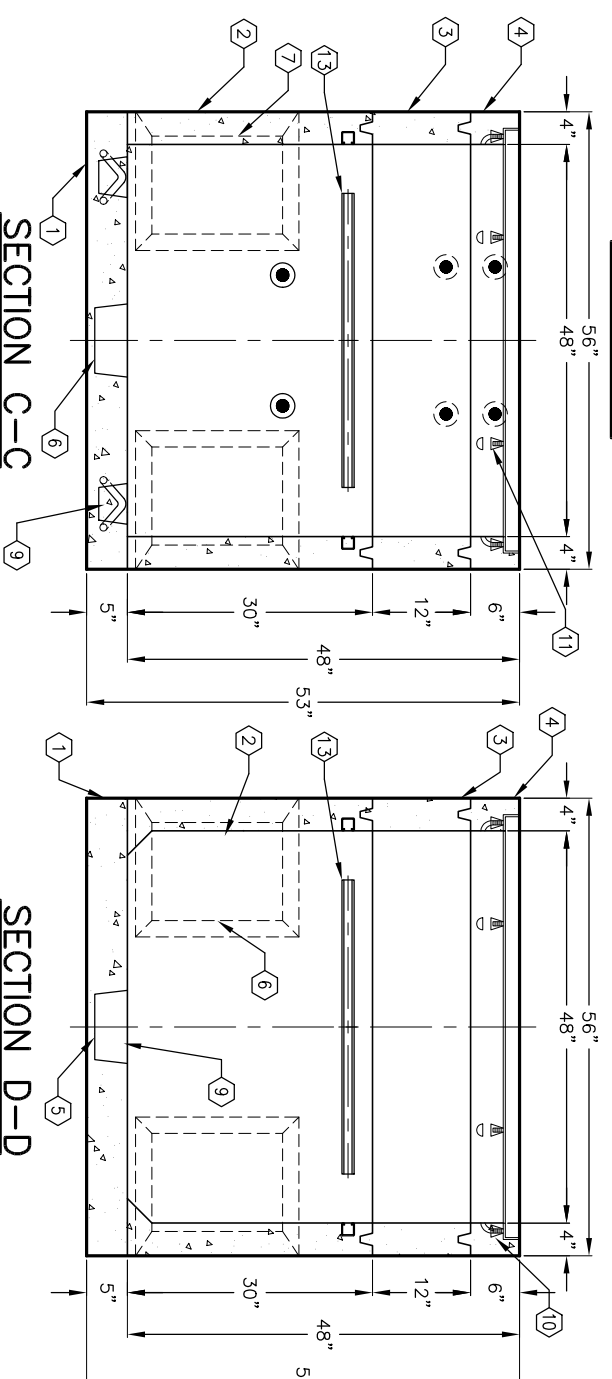
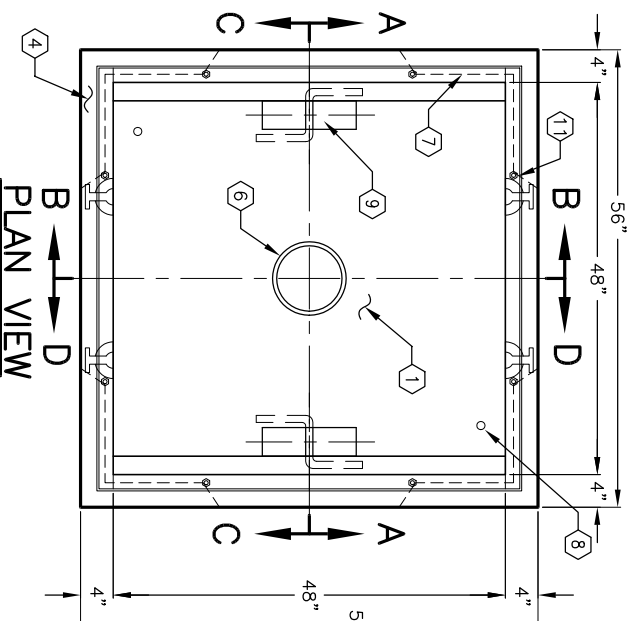
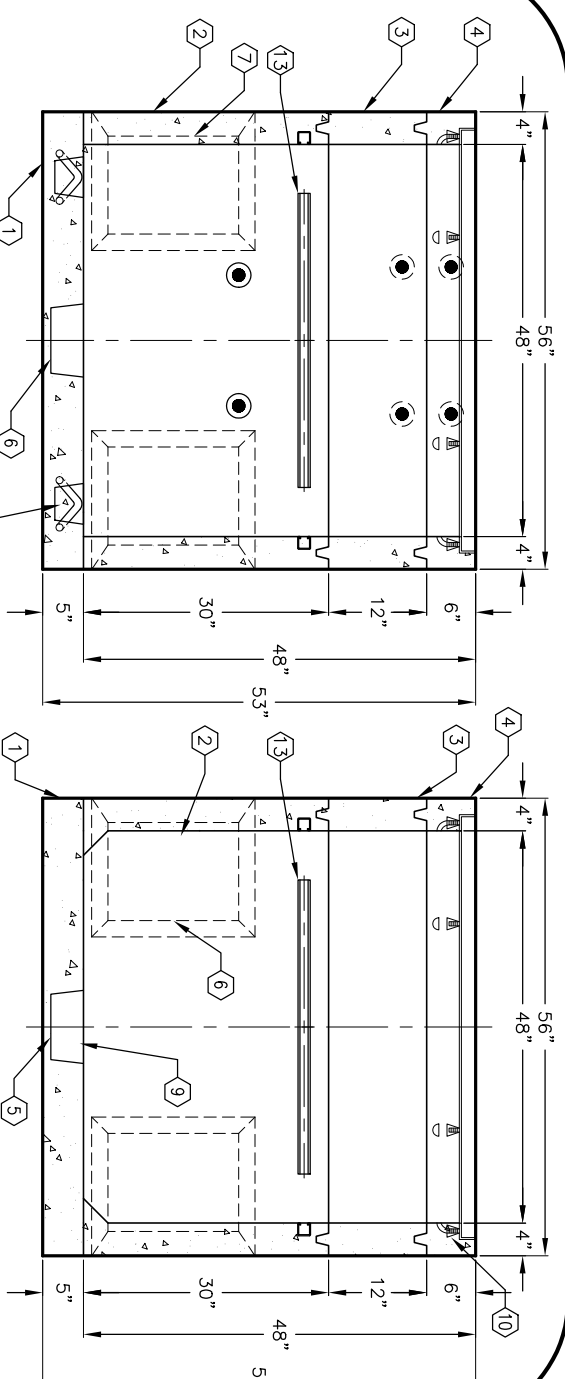
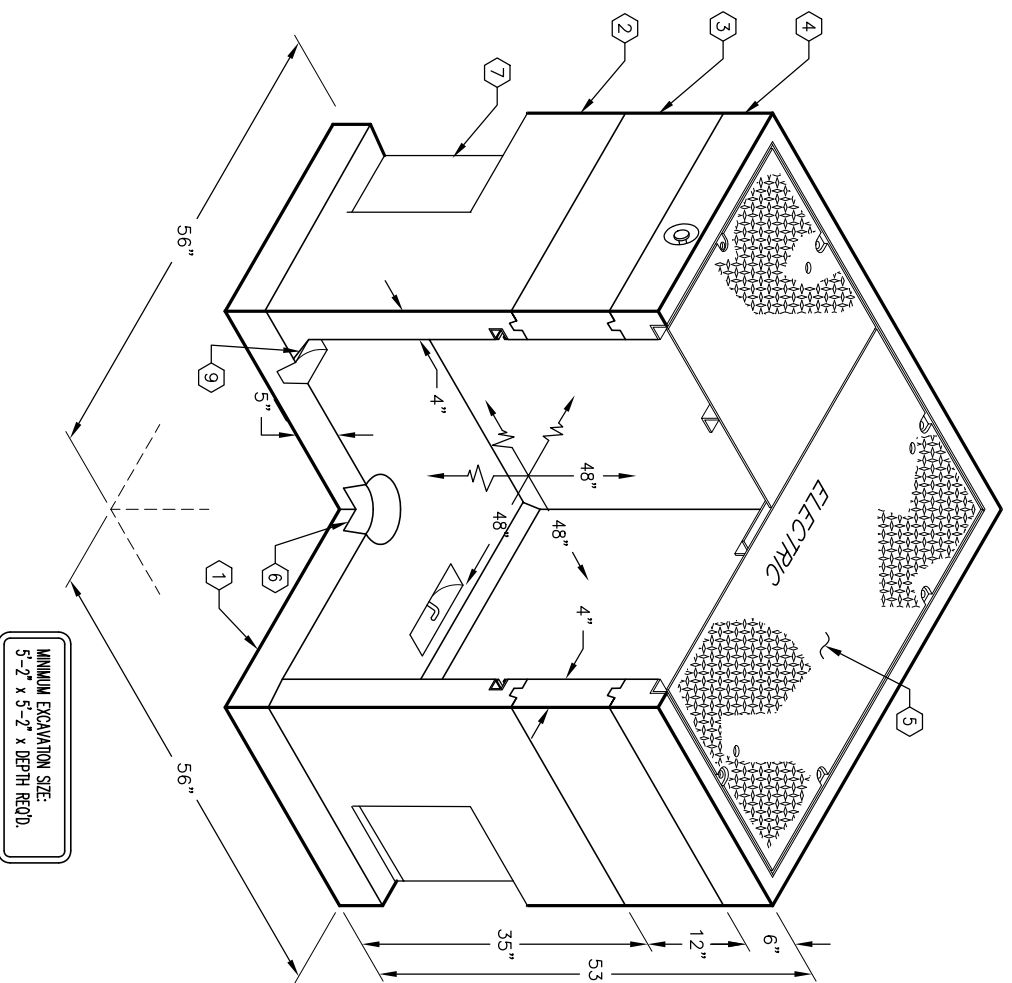
ORDERING INFORMATION:

PER CITY OF ANAHEIM SPEC. CU 1600-14A,  
TOTAL WEIGHT OF ASSEMBLY SHOWN IS 5,141 Lbs.

- PB44-B-5, 5" BOTTOM SLAB. WT. 1,561 Lbs.
- PB44F-130-16, 30" LOWER SECTION. WT. 2,167 Lbs.
- PB44-R12, 12" EXTENSION SECTION. WT. 867 Lbs.
- PB44-T6F, 6" TOP SECTION. W/ (F44-PB-ANG) CAST-IN GALV. ANGLE FRAME. WT. 433 Lbs.
- SC44-PGVE, ONE PIECE PARKWAY COVER GALV., MARKED "ELECTRIC".
- SC44-TGVE, ONE PIECE TRAFFIC COVER GALV., MARKED "ELECTRIC".
- 8" x 9" DIA. SUMP x 4" DEEP. LOCATE AS FOLLOWS:  
BOTTOM SECTION (1) CORE MTD.  
12" x 12" x 16" K.O. x 3 1/2" DEEP. DRAFT AS FOLLOWS:  
F-S1=S2=2", B=0". LOCATE AS FOLLOWS: BOTTOM SECTION (4) SHELL MTD.
- 1" DIA. GROUND ROD HOLE. LOCATE AS FOLLOWS: (2) CORE MTD.  
7/8" GALV. RECESSED PULL IRON. LOCATE AS FOLLOWS:  
BOTTOM SECTION (2) CORE MTD.
- 1/2" P-35-T OB INSERT W/CLEAN OUT HOLE. LOCATE AS FOLLOWS:  
TOP SECTION (8) FRAME MTD.
- 1 5/8" x 1 5/8" x 36" LONG GALV. UNISTRUT CAST-IN (55-21-036) 4 PLACES - CORE MTD.

## PARKWAY ASSEMBLY WITH STEEL B/D COVER K44-F148-16P. LIGHT TRAFFIC ASSEMBLY WITH STEEL B/D COVER K44-F148-16L.

- GENERAL NOTES:
- Minimum soil bearing capacity is hereby assumed to be 2000 PSF unless otherwise documented by a geotechnical report that shall be provided to Jensen Precast by the end user. Jensen Precast shall not be held responsible for the soil bearing capacity.
  - Installation of Manholes, Vaults, Handholes, Meter Boxes etc. will be as per Jensen installation procedures.
  - Structural modification to the Jensen line of products is not permitted without prior written approval from Jensen Engineering Department.
  - Do not scale the drawings, verify all dimensions including rough openings, if any discrepancies are found, notify the Jensen Engineer immediately.
  - The Jensen Engineer will interpret the intent of the drawings in case of possible conflict or discrepancy.
  - Permissible Variations:  
Dimensional Tolerances - The length, width, height, or dia. measurements of the structure when measured on the inside surfaces shall not deviate from design dimensions by more than the following:  
Dimensions: Tolerance:  
0 to 5 Feet 1/4"  
5 to 10 Feet 3/8"  
10 to 20 Feet as agreed upon between the supplier and purchaser.  
Squariness Tolerance:  
The inside of the precast concrete component shall be square as determined by diagonal measurements. The difference between such measurements shall not exceed the following:  
Measured Length: Allowable Difference  
0 to 10 Feet 1/2"  
10 to 20 Feet 3/4"  
20 Feet and over as agreed upon between the supplier and purchaser.



#	DATE	DESCRIPTION	BY