

4686 PG&E

4'-6" X 8'-6" X 7'-6" I.D.
(NOMINAL DIMENSIONS)
TRANSFORMER ENCLOSURE

PG&E #04-0324*

RECESSED ID. PLATE
4 TOTAL

HEAVY DUTY
LIFT-OUT COVER
DESIGN LOAD:
FULL H-20 TRAFFIC

STEEL FRAME
GALVANIZED

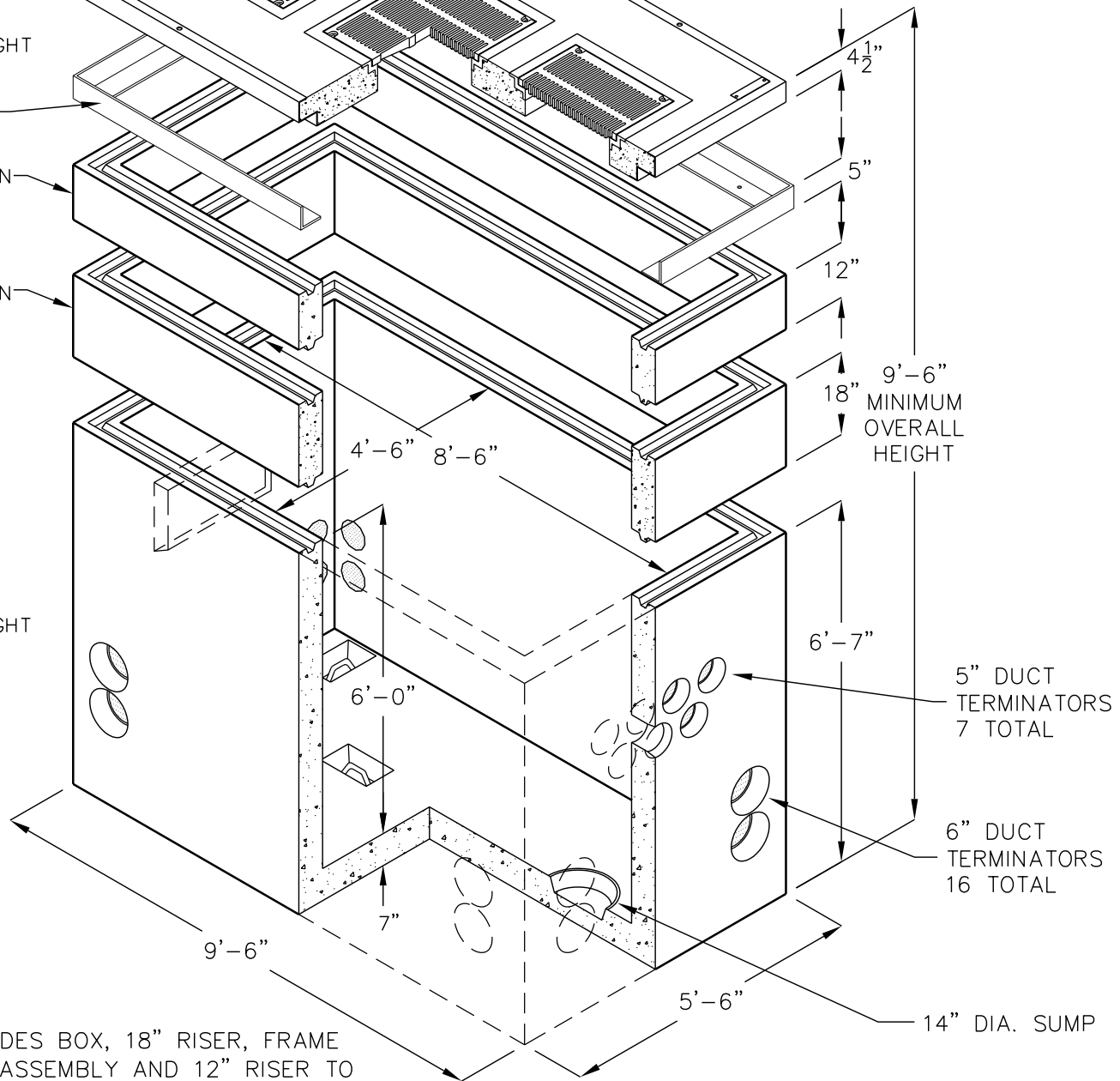
COVER ONLY
PG&E CODE
04-1442
APPROX. WEIGHT
4100 LBS.

GALVANIZED
STEEL FRAME

12" EXTENSION
PG&E CODE
04-3415

18" EXTENSION
PG&E CODE
04-3377

BOX ONLY
PG&E CODE
04-3376
APPROX. WEIGHT
17300 LBS.



*CODE INCLUDES BOX, 18" RISER, FRAME AND COVER ASSEMBLY AND 12" RISER TO ACCOMMODATE FULL TRAFFIC COVER.

DUCT TERMINATOR SIZE AND LOCATION, KNOCKOUTS, PULLING IRONS, ETC. PER CURRENT PG&E SPECIFICATIONS.

FOR COMPLETE DESIGN AND PRODUCT INFORMATION CONTACT JENSEN PRECAST.