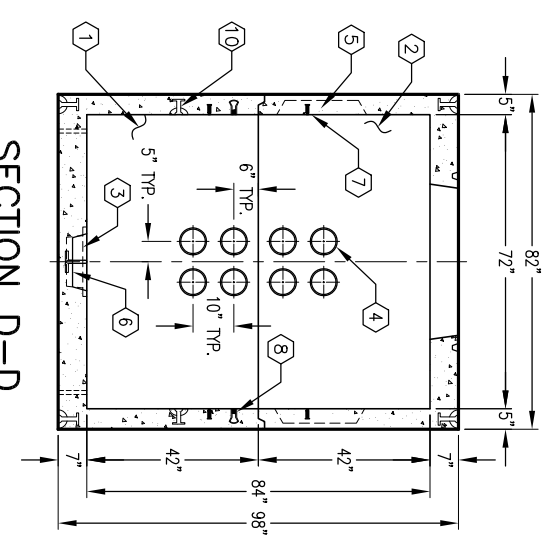
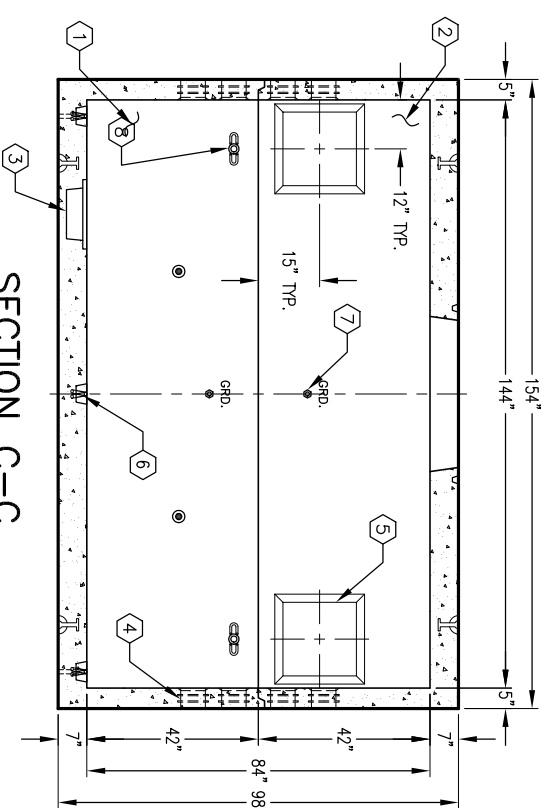
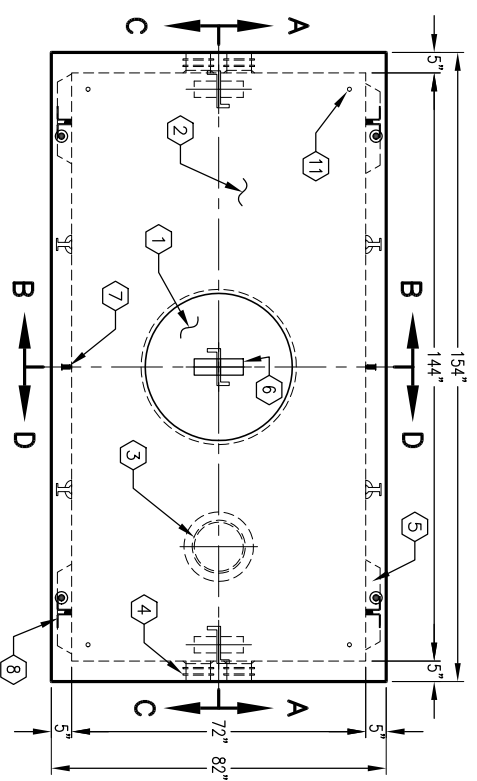
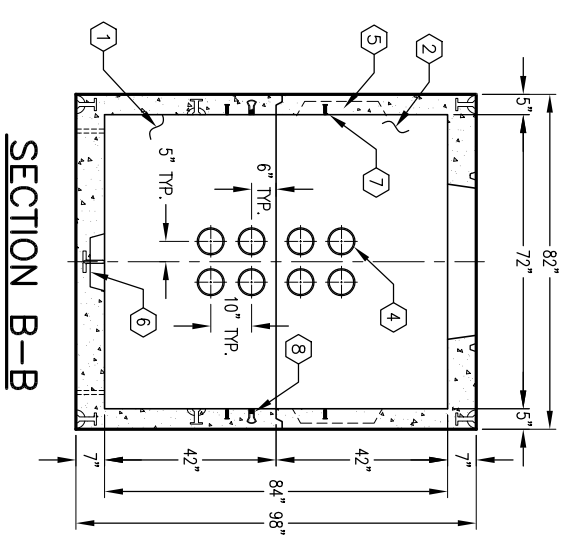
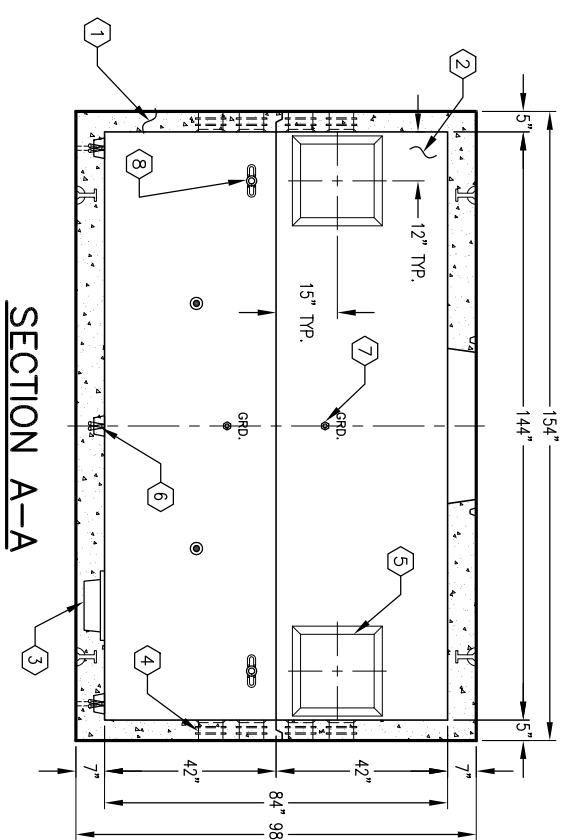
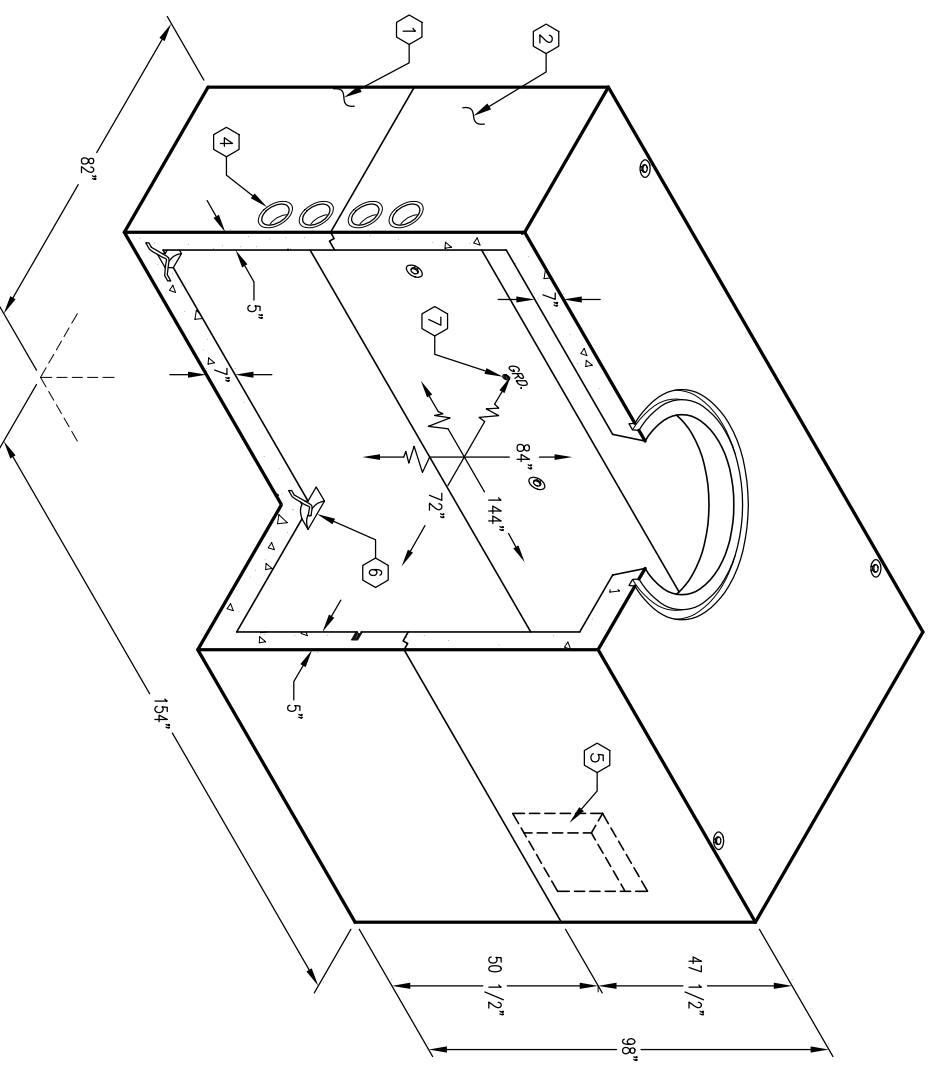


# 6'-0" x 12'-0" BURBANK MANHOLE x 7'-0" DEEP

**NOTES:**

- DESIGNED IN ACCORDANCE WITH AASHTO. H-20-44 BRIDGE LOADING USING 5,500 PSI COMPRESSIVE STRENGTH CONCRETE AND 60,000 PSI YIELD STRENGTH ASTM A-706 STEEL REINFORCEMENT PER CALCS #30415.
  - MANHOLE TO BE PLACED ON A MIN. 6" BASE OF CRUSHER RUN FOR EASE OF INSTALLATION AND EVEN LOAD DISTRIBUTION.
  - INSIDE SURFACES OF MANHOLE TO BE PAINTED WITH WHITE LATEX PAINT.
- ORDERING INFORMATION:**
- K612-FM84-17 FOR ASSEMBLY AS SHOWN.  
TOTAL WEIGHT OF ASSEMBLY IS 31,208#.

1. UV612-B42-17, 42" BOTTOM SECTION (6000-222). WT. 15,913#.
2. UV612-T42-17M, 42" TOP SECTION W/36" (6000-223M). WT. 15,295#.
3. 12" x 13" DIA. SUMP x 5" DEEP, W/RECESS TO ACCOMMODATE SUMP COVER (08-2102), BOTTOM SECTION (1) CORE MTD.
4. 6" DIA. CONTERMS, BOTTOM SECTION (8) SHELL MTD.; ROOF SECTION (8) SHELL MTD.
5. 18" x 18" KNOCKOUT x 3 1/2" DEEP, DRAFT 2" TYP. ALL SIDES, ROOF SECTION (4) CORE MTD.
6. 7/8" DIA. x 3 3/8" GALV. PULL IRON, BOTTOM SECTION (5) CORE MTD.
7. 1/2" THRD. BRONZE INSERT BRAZED TO STRUCTURAL STEEL, 1/2" SHALL BE STENCILED IN RED LETTERS (1 1/2" MIN - 2" MAX) ON THE CONCRETE ABOVE INSERT, BOTTOM SECTION (2) CORE MTD.; ROOF SECTION (2) CORE MTD.
8. 1" DIA. THRD. INSERT, BOTTOM SECTION (4) CORE MTD. 4 TON x 9 1/2" RISS, BOTTOM SECTION (4) SURFACE MTD.; ROOF SECTION (4) SURFACE MTD.
9. 4 TON x 4 3/4" RISS, BOTTOM SECTION (4) CORE MTD. 1" DIA. BLIND GROUND ROD HOLE, BOTTOM (4) CORE MTD.
- 10.
- 11.



#	DATE	DESCRIPTION	BY