

# COMMUNICATION VAULT

3'-6"x3'-6"x3'-2"

(NOMINAL INSIDE DIMENSIONS)

CITY OF PEORIA  
PB9-COP

COVER MARKED  
"CITY OF PEORIA  
TRAFFIC SIGNAL  
COMMUNICATION"

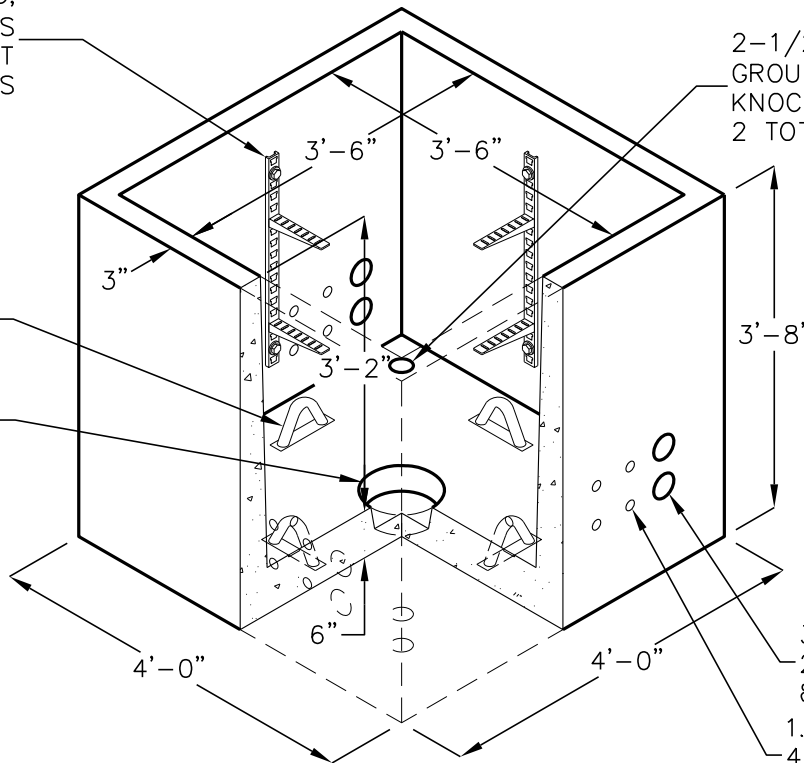
36"x36" GALVANIZED  
SPRING ASSISTED COVER  
WITH 180° LAYBACK HINGE  
AND RECESSED PADLOCK BOX  
RECESSED HANDLE,  
PENTAHEAD LOCKING BOLTS.  
CAST IN FLUSH  
CENTERED IN SLAB



18 HOLE CABLE RACKING,  
WITH TWO 7.5" ARMS  
BOLTED INTO UNISTRUT  
INSIDE WALLS

PULLING IRONS  
4 TOTAL

9" DIA. SUMP



2-1/2" DIA.  
GROUND ROD  
KNOCKOUTS  
2 TOTAL

3" TERMADUCTS  
2 EACH WALL  
8 TOTAL

1.25" TERMADUCTS  
4 EACH WALL  
16 TOTAL

DESIGN LOAD: INCIDENTAL H-20 DESIGN FOR 16,000 LB WHEEL LOAD WITHOUT IMPACT,  
IN AREAS OF LOW SPEED INTERMITTENT TRAFFIC ONLY; NOT FOR HIGH DENSITY TRAFFIC.

WATER TABLE ASSUMED TO BE BELOW BOTTOM OF STRUCTURE.

FOR COMPLETE DESIGN AND PRODUCT INFORMATION CONTACT JENSEN PRECAST.

Jensen Precast reserves the right to make changes to product design  
and/or dimensions without notice. Please contact Jensen Precast whenever  
necessary for confirmation or advice on product design.

**JENSEN**  
PRECAST